

DISCOVERY

Energy Services

COMPLETIONS AND WORKOVER RIG RIG DISCOVERY 10 SPECIFICATIONS BROCHURE



ISO 9001: 2008
ISO 14001: 2004
OHSAS 18001: 2007
BUREAU VERITAS
Certification



N° C0223270 / N° C0223271 / N° C0232372



HIGHLIGHTS

Name:	Discovery 10
Brand	Loadcraft
Power:	595 HP
Year:	2014
Double Drum:	Drawworks and Sandline Drums
Type:	Self-propelled Land Rig
Static Hook Load:	300.000 Libras
Working depth:	16.000 FT TUBING 3-1/2"





CARRIER

CARRIER

Specifications	Data
Manufacturer	Loadcraft
Model	LCI 595 HD
Brakes	Air brakes in all wheels
Steering	Hydraulic powered
Front axles	2
Rear axles	3
Headlights	Stop and taillights
Reflectors	Air horn
Cab	One man, washer and wiper
Mirrors	Two rear view mirrors





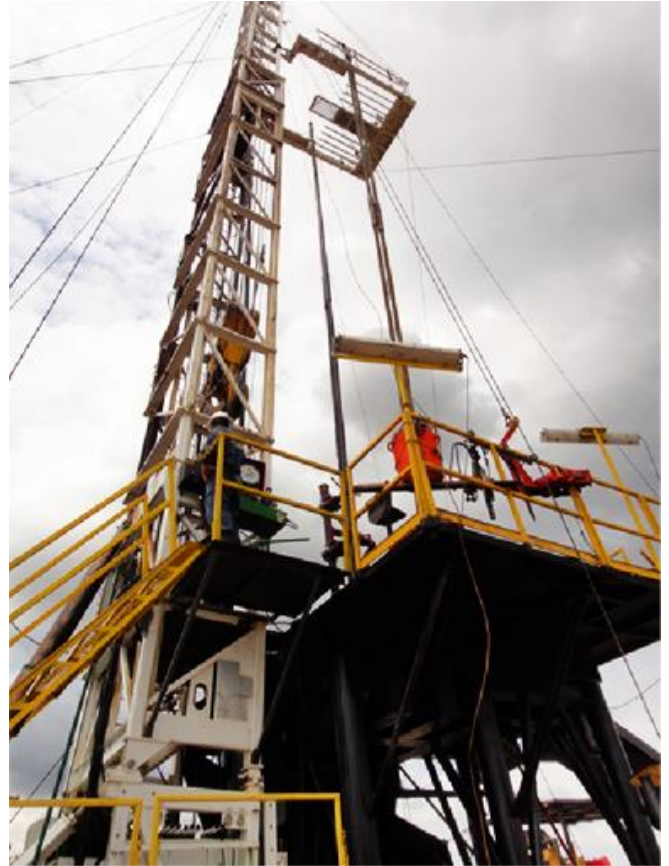
Rig Discovery-10



MAST AND SUBSTRUCTURE

MAST

Specifications	Data
Manufacturer	Loadcraft
Model	104/300
Type	Telescoping double
Clear Height	104ft
Static Hook Load	300.000 Lbs
Drilling line size	1"



MAST SUBSTRUCTURE

Specifications	Data
Manufacturer	Prodimetales
Year	2014
Type	Telescoping (Low boy)
Height	15ft
Capacity	300.000 Lbs
Clearence	12ft
Weight	12.000 Kg
Rotary Table:	Sentry 17-1/2" and 250 Ton

HOISTING EQUIPMENT

DRAWWORKS

Specifications	Data
Manufacturer	Loadcraft
Year	2014
Model	595/42-12, 42X12
Size	42 X 12"
Single line pull	42.500 Lbs
Shaft Diameter	6-1/2"
Horse power rating	595 HP
Drum Capacity	3260 ft, 1" Wire rope



AUXILIARY BRAKE

Specifications	Data
Manufacturer	Parmac
Reference	202



HOISTING EQUIPMENT

SANDLINE DRUM

Specifications	Data
Manufacturer	Loadcraft
Model	42X8
Size	42 X 8"
Drum Capacity	14.400 ft of 9/16 Sandline

TRANSMISSION

Specifications	Data
Manufacturer	Caterpillar
Model	CAT TH35-E81
Type	Automatic
Power shift	From cab and rear control



ENGINE

Specifications	Data
Manufacturer	Caterpillar
Model	CAT C15
Rating	595 HP @ 2100 rpm
Exhaust	With spark arrestor
Air compressor	Driven from engine
Emergency stop	High water temp, low oil pressure and overspeed emergency shutdown

HOISTING EQUIPMENT

HYDRAULIC SYSTEM

Specifications	Data
Hydraulic pump	50 GPM (PTO Driven by transmission)
Oil Tank	195 Gal
Max. Pressure	2500 PSI @ 2100 rpm
System rating pressure	3000 PSI
Raising Cylinder	Three stages (hydraulic)
Jackscrews	4 hydraulic leveling jacks

HANDLING WINCH

Specifications	Data
Type	Hydraulic powered
Capacity	8.000 Lbs
Rated line pull	100 fpm and 2.000 PSI
Line	325 ft of 1/2"
Fail-safe brake	Included

TRAVELING BLOCK

Specifications	Data
Manufacturer	IDECO
Type	Hook block
Reference	160
Load capacity	160 TON
Sheaves	4 sheaves of 1"
Fail-safe brake	Included
Link elevators	150 TON, 6 ft

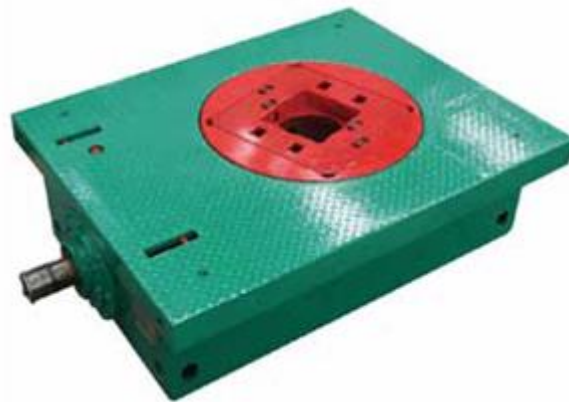




ROTARY SYSTEM

ROTARY TABLE

Specifications	Data
Manufacturer	IDECO
Reference	175 F
Load capacity	150 TON
Size	17-1/2"
Max. Working torque	10.132 ft.Lbs
Max speed	300 rpm



KELLY SYSTEM

Specifications	Data
Kelly type	Square 3-1/2" X 40ft
Bottom conexión	3-1/2 IF pin
Top conexión	6-5/8 Reg LH box
Kelly drive bushing	Square drive 17-1/2"
Kelly master Bushing	Included
Load capacity	150 TON
Size	17-1/2"
Max. Working torque	10.132 ft.Lbs
Max speed	300 rpm



ROTARY SYSTEM

SWIVEL

Specifications	Data
Manufacturer	Western Rubber
Bottom connexion	6-5/8 Reg LH pin
Reference	15 NV
Capacity	150 Ton
Rotating load capacity	90 Ton @ 100 rpm
Working pressure	4.500 PSI
Main bearing	Full apex roller
Fluid passage	3"
Rotary hose	3" X 5000 PSI (35ft)





CIRCULATING SYSTEM

MUD PUMP

Specifications	Data
Manufacturer	Work Force
Reference	WWS-500 Triplex Pump
Liners	4-1/2
Stroke length	8"
Engine	Detroit Serie 60
Horse power rating	430 HP
Transmission	Automatic Allison 750





CIRCULATING SYSTEM

MUD TANKS

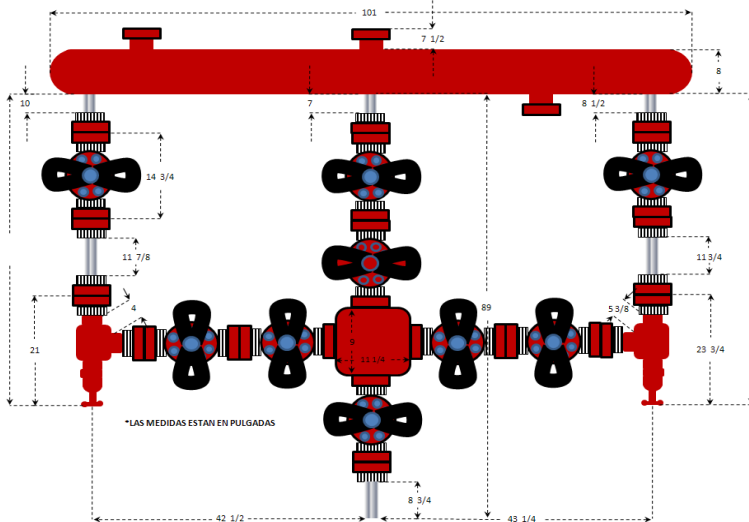
Specifications	Data
Qty	2
Capacity	250 BBL (TOTAL: 500 BBL)
Agitators	2 (for each tank)
Cetrifuge	4X6 (Electric engine of 40HP)
Type	Fast move
Fixed poor boy	Included
Electric instalation	Explosion proof (6 lamps)
Mud mixing Hopper	Included



WELL CONTROL SYSTEM*

ANULAR BOP

Specifications	Data
Manufacturer	Hydril
Size	11 X 5M
Top conexión	Studded
Bottom conexión	Flanged
Max. Working pressure	5000 PSI



RAM BOP

Specifications	Data
Manufacturer	Hydril
Size	11»X5M
Top conexión	Studded
Bottom conexión	Studded
Max. Working pressure	5000 PSI
Rams	Blind Rams and Pipe rams
Pipe rams	3-1/2 and 2-7/8



CHOKE MANIFOLD

Specifications	Data
Reference	2-1/16 X 5M
Valves	9 gate flanged valve 2-1/16 X 5M
Conexiones	2" Fig. 1502
Chokes	2 graduable chokes

*all well control equipment is as per API RP 53

WELL CONTROL SYSTEM*

ACCUMULATOR UNIT

Specifications	Data
Bottles	6 for 10 Gal
Working pressure	3000 PSI
Pre-charge pressure	1000 PSI
Hydraulic pump	Triplex
Pneumatic pump	Included
Four way rotary valve	3
Pressure regulator	2
Electric system	Explosion proof





WELL CONTROL SYSTEM*

POOR BOY

Specifications	Data
Size	24"
Type	Fixed at mud tank
Liquid outlet	6"
Gas outlet	3"





POWER SYSTEM

GENERATORS

Specifications	Data
Manufacturer	Cummins and power link
Qty	2
Capacity	131 KVA
Cabin	Isolated cabin





MANUAL TOOLS

Specifications	Data
Pipe wrenches	2 of each size (24, 36, 48 y 60)
Chain wrenches	24 and 36"

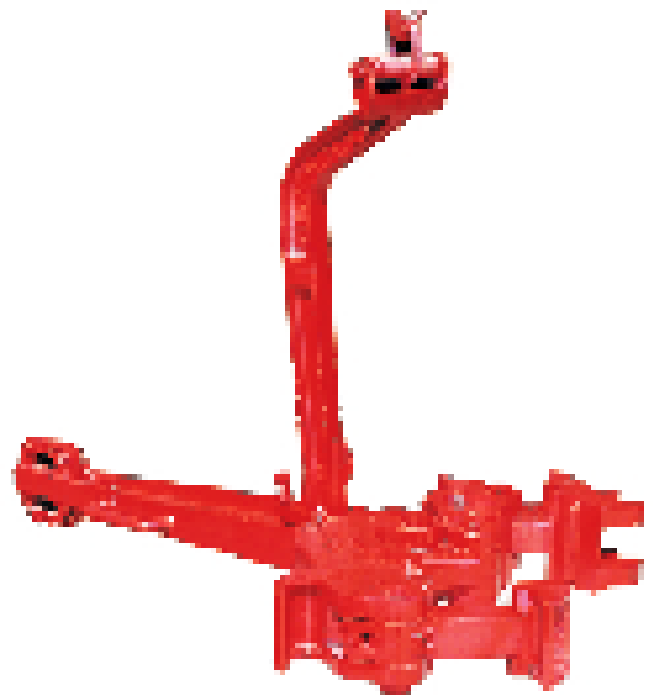
HYDRAULIC TONG

Specifications	Data
Manufacturer	Foster
Tubing sizes	2-3/8, 2-7/8, 3-1/2
Reference	58-93R
Type	Hydraulic powered



MANUAL TONGS

Specifications	Data
Manufacturer	BJ
Type	C
Range	3-1/2 to 5-1/2" and 7 to 8-1/2"
Torque rating	Up to 35.000 Lbs





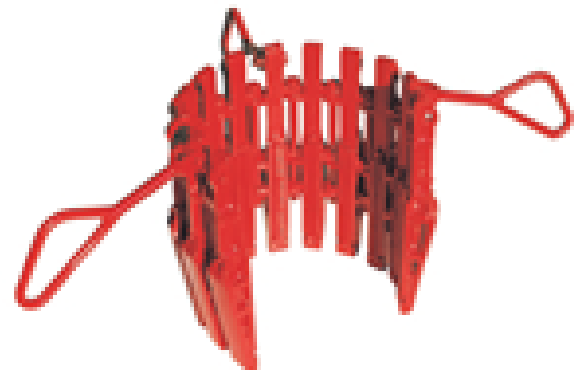
ELEVATORS

Specifications	Data
Tubing elevators	90° for 2-3/8, 2-7/8 and 3-1/2
Drill pipe elevator	18° for 3-1/2
Torque rating	Up to 35.000 Lbs
Type	Latch



SLIPS

Specifications	Data
Pneumatic slips	Cavins for 100 tons (2-3/8 to 3-1/2)
Rotary slips	Varco - BJ (2-7/8 to 3-1/2) 150 tons
Drill Collar slips	4-3/4 Drill Collar slips
Safety clamp	4-3/4 Drill Collars

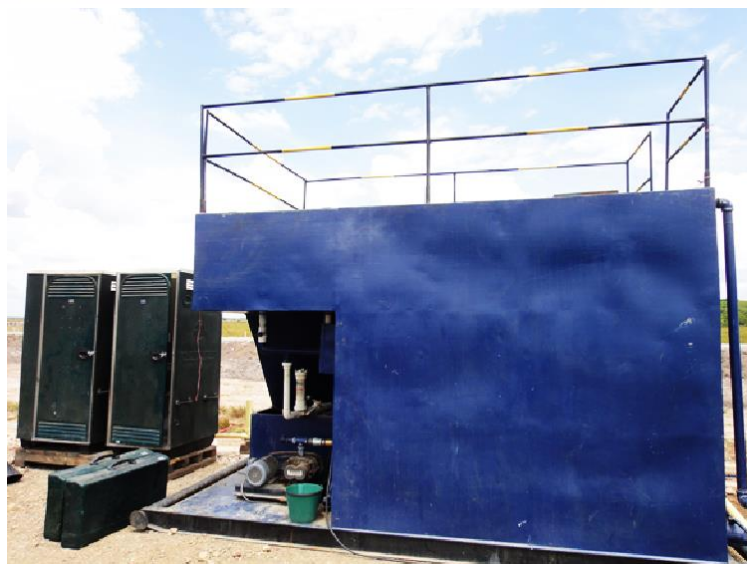




CAMPING

MIN CAMP

Specifications	Data
Units	3
Beds	2 or 4 for every room
Bathroom	1 for each room
Year	2010
Skidd	Yes
Refrigerator	For Coman and assistant
Red fox unit	60 people capacity
Dining room	included





INSTRUMENTATION

WEIGHT INDICATOR

Specifications	Data
Manufacturer	Martin Decker
Type	Clipper
Lines	8 lines of 1"
Range	0-280.000 Lbs

JOINT TORQUE

Specifications	Data
Manufacturer	Martin Decker
Range	0-10.000 ft.Lbs
Type	Pressure Cell

ROTARY TORQUE

Specifications	Data
Manufacturer	Forum
Range	0-500

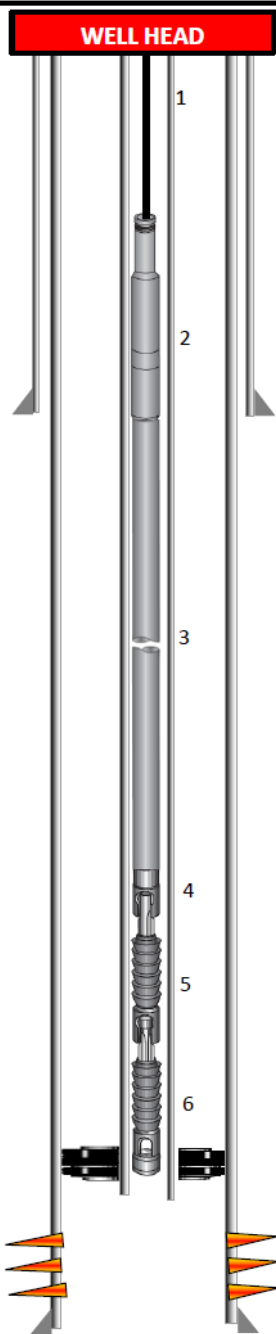
STROKE COUNTER

Specifications	Data
Model	5700
Totalizer	Included
Mud pumps	2

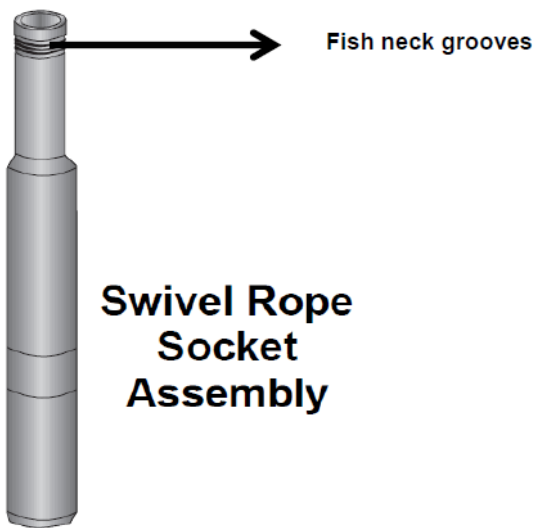
MISCELLANEOUS



DISCOVERY ENERGY SERVICES S.A. BOTTOM HOLE ASSEMBLY OF SWABBING RIG: DISCOVERY 3 550HP



	DESCRIPTION	BRAND	SERIAL	OD	QTY	LENGTH	CUM.
BOTTOM HOLE ASSEMBLY							
1	Sandline 6X7 Bright, PF, RL, IPS, FC	MADE IN USA	NA	9/16	1	14000	0
2	Swivel Rope socket assembly, 3/4 SR Box	GUIBERSON	20511	1-3/4	1	1,17	1,17
3	Sinker bars 1-1/2 X 10ft	AFTER MKT	NA	1-1/2	2	20,00	21,17
4	Knuckle joint tubing swab mandrels	Sub	GUIBERSON	33911	1	2,17	23,34
5		Upper mandrel	GUIBERSON	33912			
6		Lower mandrel	GUIBERSON	33913			
COMMENTS							
	Swab cups	GUIBERSON	53692	2,94	2		





MISCELLANEOUS

SWABBING EQUIPMENT

Specifications	Data
Oil saver	Guiberson HD
Swivel rope socket	Guiberson for 9/16
Sinker bars	2 of 10ft
Swab mandrel	Knuckle joint type (2)
Hydraulic pump	Including a hose of 50ft
Dephtometer	Cavins
Lubricator	4"
Swabbing tree	4" with 3 gate valves (4"X5M)

SAFETY EQUIPMENT

Specifications	Data
Fall Protection	Full body harnesses, Body belts, Lanyards , SRL'S.
Low speed descender	Included
Climbing assist system	Included
Gas detector	Portable
Breathalyzer	Portable

